

1 2 3 4 5 6 7 8 9

A

B

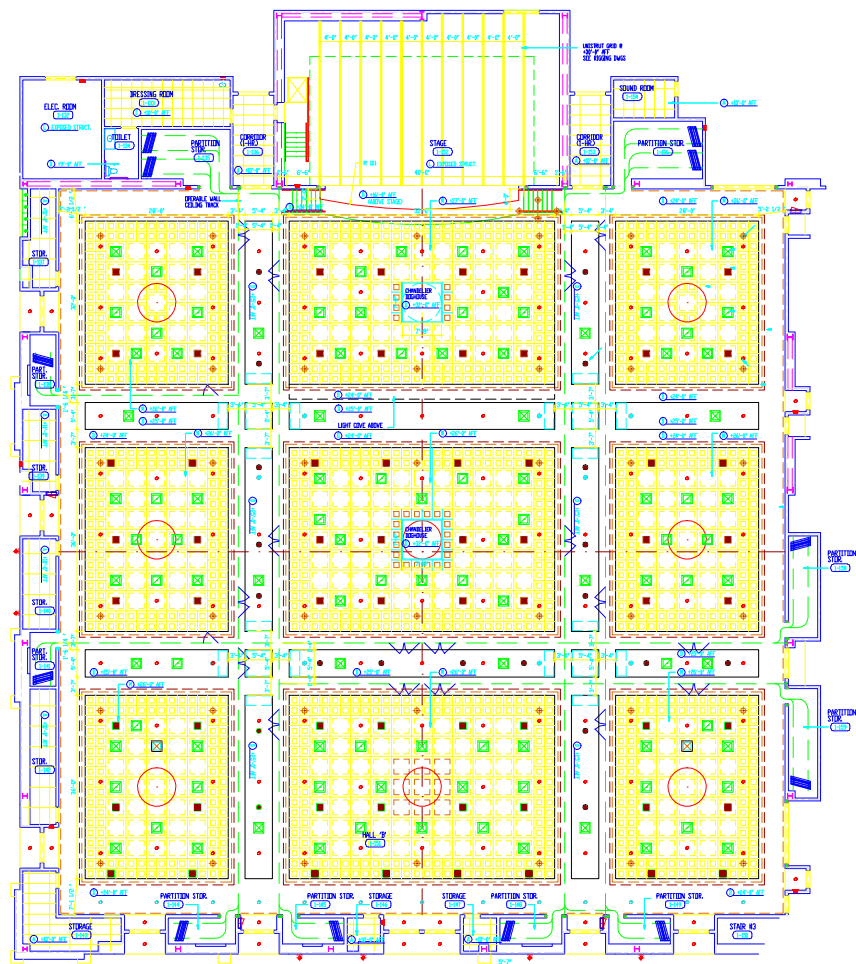
C

D

E

F

G



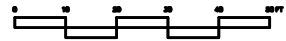
**Legend**

⊕ FLOOR POINT 20000 per

⊕ Ceiling Height: 20'0"

See the Rio Pavilion and Convention Center Document for more details.

This drawing is preliminary information intended for representation of concepts and for discussion purposes only. It is not intended to be used as a guide to the approximate scope of the work. Some or all variations or omissions may occur. Encore Productions is not responsible for any uncorrected errors in this document.



DESIGNED BY: \_\_\_\_\_  
 DRAWN BY: \_\_\_\_\_  
 CHECKED BY: \_\_\_\_\_  
 APPROVED BY: \_\_\_\_\_  
 DATE: \_\_\_\_\_  
 DRAWING NAME: Brasilia\_Ballroom

**Rio Las Vegas**

Brasilia\_Ballroom

DATE: 11/11/11  
 SHEET NO: 1  
 OF: 1

1 2 3 4 5 6 7 8 9